

Graphite in Cast Iron



Scentis Image Modules

Designed for use with Struers
Scentis Lab Management System

Introduction: The Graphite Module is specifically developed with accuracy and repeatability in mind. By using the latest image analysis techniques a user can automatically classify graphite in cast iron. The module conforms to procedures described in both ASTM and ISO norms. Unlike manual methods, the module uses state-of-the-art algorithms to determine type, size, shape and distribution of graphite. This minimizes operator interaction and bias when rating these highly complex microstructures.

Whether you're a seasoned image analysis professional or a novice, you will find the intuitive interface and Wizard features of this module reassuring as you greatly improve both the quality and throughput of your testing.

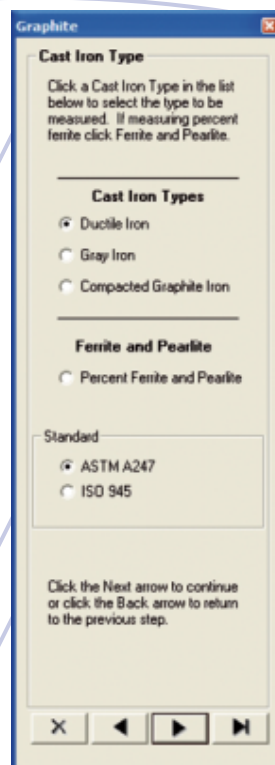
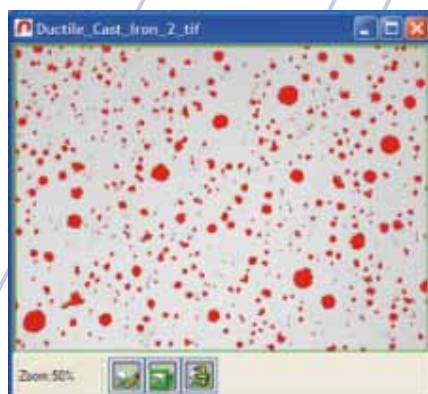
Graphite Measurement

- Accurately classify graphite using either ASTM or ISO norms
- Evaluate multiple cast iron types including:
 - Ductile / Nodular
 - Gray / Flake
 - Compacted
- For ductile cast iron you can determine:
 - Nodularity (%)
 - Total graphite
 - Nodule (particle) count
 - Nodule count per unit area (density)
 - Average diameter
 - Average shape factor
 - Percent Ferrite and Pearlite
- For gray cast iron you can determine:
 - Size class count
 - Size class percent
 - Total graphite
 - Flake type
 - Flake (particle) count
 - Flake count per unit area (density)
 - Percent Ferrite and Pearlite

- For compacted cast iron you can determine:
 - Compactness (%)
 - Total graphite
 - Particle count
 - Compacts per unit area
 - Average compact size
 - Average shape factor
 - Percent Ferrite and Pearlite

Reporting Options

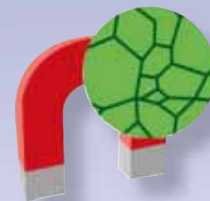
- Multiple reporting options include:
 - Raw data reporting
 - Built-in report generator using List & Label®
 - Export to Microsoft Excel®



Optional plug-in image analysis modules provide state-of-the-art evaluation methods for everything from grain sizing to inclusion rating. Employ image analysis modules for evaluations according to international standards.

Why purchase an image analysis system with features you will never use? With Scentis you only purchase the image analysis modules you need.

The Scentis image modules allow you to perform sophisticated analysis very easily. Simply select the appropriate analysis module and follow the intuitive guidance of the built-in wizards.



New to image analysis?

Try the built-in Scentis Wizard for simple step-by-step assistance through the entire process.

A seasoned professional?

Get directly to the analysis with powerful built-in tools.

Desire repeatability?

Easily establish a "best practice" by utilizing the built-in technique recorder.

Desire reproducibility between operators or multiple laboratories?

Share your methods with other module owners using our unique "setup" filing structure.





Struers A/S
 Pederstrupvej 84
 DK-2750 Ballerup, Denmark
 Phone +45 44 600 800
 Fax +45 44 600 801
 struers@struers.dk

USA and CANADA
Struers Inc.
 24766 Detroit Road
 Westlake, OH 44145-1598
 Phone +1 440 871 0071
 Fax +1 440 871 8188
 info@struers.com

SWEDEN
Struers A/S
 Smältvägen 1
 P.O. Box 11085
 SE-161 11 Bromma
 Telefon +46 (0)8 447 53 90
 Telefax +46 (0)8 447 53 90
 info@struers.dk

FRANCE
Struers S.A.S.
 370, rue du Marché Rollay
 F- 94507 Champigny
 sur Marne Cedex
 Téléphone +33 1 5509 1430
 Télécopie +33 1 5509 1449
 struers@struers.fr

BELGIQUE
Struers S.A.S.
 370, rue du Marché Rollay
 F- 94507 Champigny
 sur Marne Cedex
 Téléphone +33 1 5509 1430
 Télécopie +33 1 5509 1449
 struers@struers.fr

UNITED KINGDOM
Struers Ltd.
 Erskine Ferry Road,
 Old Kilpatrick
 Glasgow, G60 5EU
 Phone +44 1389 877 222
 Fax +44 1389 877 600
 info@struers.co.uk

JAPAN
Marumoto Struers K.K.
 Takara 3rd Building
 18-6, Higashi Ueno 1-chome
 Taito-ku, Tokyo 110-0015,
 Phone +81 3 5688 2914
 Fax +81 3 5688 2927
 struers@struers.co.jp

CHINA
Struers (Shanghai) Ltd.
 Room 2705, Nanzheng Bldg,
 580 Nanjing Road (W)
 CN - Shanghai 200041
 Phone +86 (21) 5228 8811
 Fax +86 (21) 5228 8821
 struers.cn@struers.dk

SINGAPORE
Struers A/S
 10 Eunos Road 8,
 #12-06 North Lobby
 Singapore Post Centre
 Singapore 408600
 Phone +65 6299 2268
 Fax +65 6299 2661
 struers.sg@struers.dk

DEUTSCHLAND
Struers GmbH
 Karl-Arnold-Strasse 13 B
 D-47877 Willich
 Telefon +49(02154) 486-0
 Telefax +49(02154) 486-222
 verkauf.struers@struers.de

ÖSTERREICH
Struers GmbH
 Zweigniederlassung Österreich
 Ginzkeyplatz 10
 A-5020 Salzburg
 Telefon +43 662 625 711
 Telefax +43 662 625 711 78
 stefan.iintschinger@struers.de

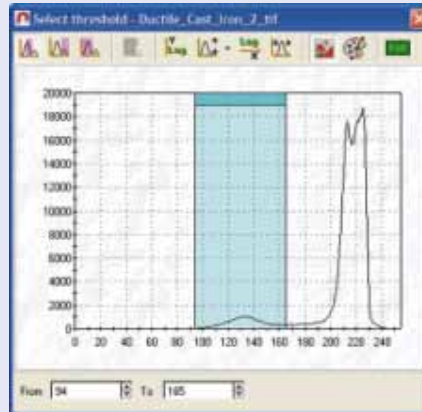
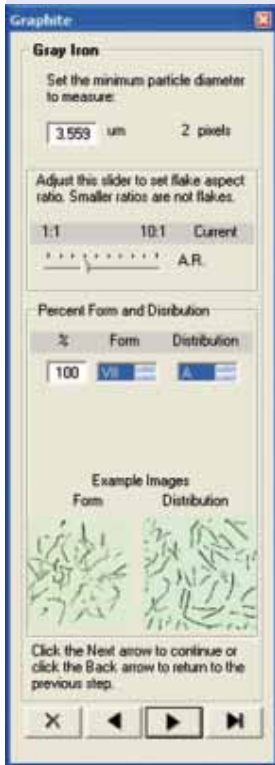
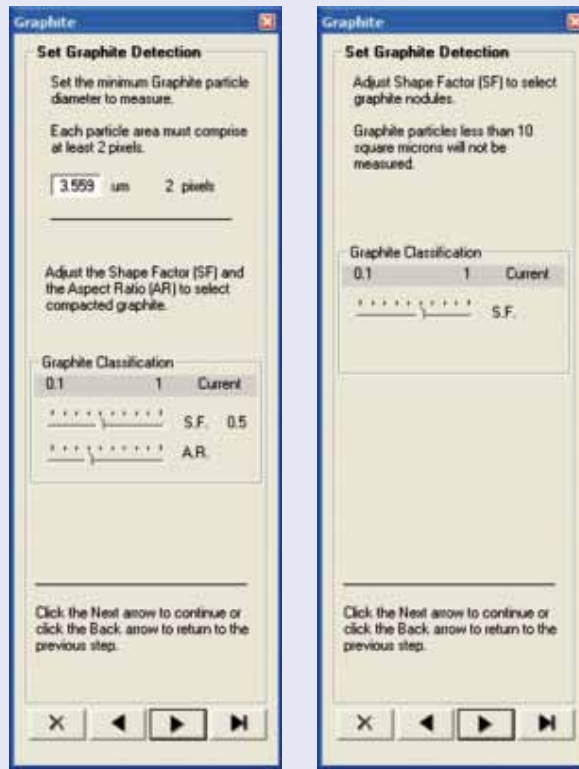
SCHWEIZ
Struers GmbH
 Zweigniederlassung Schweiz
 Weissenbrunnenstrasse 41
 CH-8903 Birmensdorf
 Telefon +41 44 777 63 07
 Telefax +41 44 777 63 09
 rudolf.weber@struers.de

THE NETHERLANDS
Struers GmbH Nederland
 Electraweg 5
 NL-3144 CB Maassluis
 Tel. +31 (0) 10 599 72 09
 Fax +31 (0) 10 599 72 01
 glen.van.vugt@struers.de

CZECH REPUBLIC
Struers GmbH
 Ocelářská 799
 CZ-190 00 Praha 9
 Tel. +420 2 84 818 227
 Fax +420 2 660 32 278
 david.cernicky@struers.de

POLAND
Struers Sp. z o.o.
 Oddział w Polsce
 ul. Lirowa 27
 PL-02-387 Warszawa
 Tel. +48 22 824 52 80
 Fax +48 22 882 06 43
 grzegorz.uszynski@struers.de

HUNGARY
Struers GmbH
 Magyarországi fióktelep
 Puskás Tivadar u. 4
 H-2040 Budaörs
 Phone +36 (23) 428-742
 Fax +36 (23) 428-741
 zoltan.kiss@struers.de



Scentis Image Modules

A large number of image analysis modules are available, many of which conform to ASTM, ISO and DIN standards:

	Code:	Cat. no:
Multiple Phase Percent Area	SCIPA	36003001
Grain Sizing	SCIRA	36003002
Inclusion or 2nd-Phase Constituent Measurement	SCIND	36003003
Particle Size / Sphericity	SCIPS	36003004
ASTM E384 Microindentation / Macro Hardness Measurement	SCIMI	36003005
Brinell Hardness Measurement	SCIBI	36003006
Thickness, Layers and Coatings	SCITI	36003007
Graphite in Cast Iron	SCICI	36003008
Dendritic Arm / Cell Spacing	SCIAS	36003009

The Scentis image modules allow you to perform sophisticated analysis very easily. Simply select the appropriate analysis module and follow the intuitive guidance of the built-in wizards.

For further information on these modules, contact your local dealer. You can also visit us at www.struers.com

Struers' products are subject to constant product development. Therefore, we reserve ourselves the right to introduce changes in our products without notice.