

# Grain Size

## Scentis Image Modules

Designed for use with Struers  
Scentis Lab Management System

**Introduction:** The Grain Size Module is specifically developed with accuracy and repeatability in mind. The module utilizes the General Intercept Procedures described in both ASTM and ISO grain size norms.

Unlike chart comparison methods, the intercept methodology of grain size determination minimizes operator bias. Intercept methods are also more convenient than Planimetric techniques. Because an accurate count can be made without need of marking off intercepts or intersections, the intercept method is faster than the planimetric method for the same level of precision.

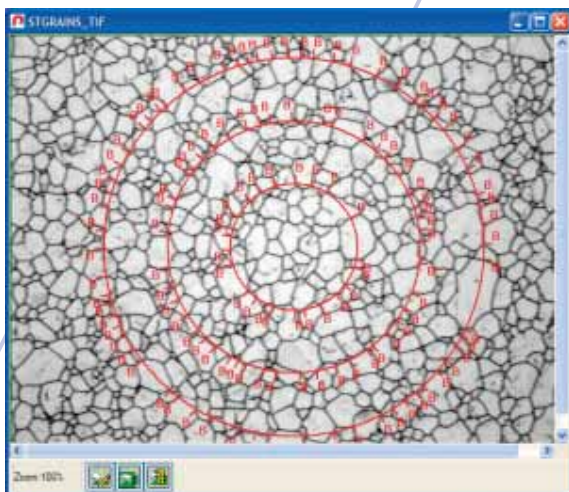
Whether you're a seasoned image analysis professional or a novice, you will find the intuitive interface and Wizard features of this module reassuring as you greatly improve both the quality and throughput of your testing.

### Grain Size Measurement

- Accurately determine grain size using either ASTM or ISO norms
- Select from several intercept overlays including:
  - Multiple circles
  - Diagonal lines
  - Horizontal lines
  - Vertical lines
- Use the new "interactive" histogram feature to accurately set the boundary detection level
- Make use of the manual "add/delete" feature for those hard-to-detect or incomplete boundaries

### Reporting Options

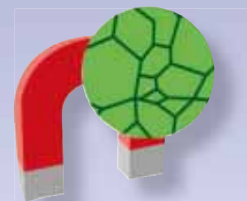
- Multiple reporting options include:
  - Raw data reporting
  - Built-in report generator using List & Label<sup>®</sup>
  - Export to Microsoft Excel<sup>®</sup>



Optional plug-in image analysis modules provide state-of-the-art evaluation methods for everything from grain sizing to inclusion rating. Employ image analysis modules for evaluations according to international standards.

Why purchase an image analysis system with features you will never use? With Scentis you only purchase the image analysis modules you need.

The Scentis image modules allow you to perform sophisticated analysis very easily. Simply select the appropriate analysis module and follow the intuitive guidance of the built-in wizards.



#### New to image analysis?

Try the built-in Scentis Wizard for simple step-by-step assistance through the entire process.

#### A seasoned professional?

Get directly to the analysis with powerful built-in tools.

#### Desire repeatability?

Easily establish a "best practice" by utilizing the built-in technique recorder.

#### Desire reproducibility between operators or multiple laboratories?

Share your methods with other module owners using our unique "setup" filing structure.





**Struers A/S**  
 Pederstrupvej 84  
 DK-2750 Ballerup, Denmark  
 Phone +45 44 600 800  
 Fax +45 44 600 801  
 struers@struers.dk

**USA and CANADA**  
**Struers Inc.**  
 24766 Detroit Road  
 Westlake, OH 44145-1598  
 Phone +1 440 871 0071  
 Fax +1 440 871 8188  
 info@struers.com

**SWEDEN**  
**Struers A/S**  
 Smältvägen 1  
 P.O. Box 11085  
 SE-161 11 Bromma  
 Telefon +46 (0)8 447 53 90  
 Telefax +46 (0)8 447 53 99  
 info@struers.dk

**FRANCE**  
**Struers S.A.S.**  
 370, rue du Marché Rollay  
 F- 94507 Champigny  
 sur Marne Cedex  
 Téléphone +33 1 5509 1430  
 Télécopie +33 1 5509 1449  
 struers@struers.fr

**BELGIQUE**  
**Struers S.A.S.**  
 370, rue du Marché Rollay  
 F- 94507 Champigny  
 sur Marne Cedex  
 Téléphone +33 1 5509 1430  
 Télécopie +33 1 5509 1449  
 struers@struers.fr

**UNITED KINGDOM**  
**Struers Ltd.**  
 Erskine Ferry Road,  
 Old Kilpatrick  
 Glasgow, G60 5EU  
 Phone +44 1389 877 222  
 Fax +44 1389 877 600  
 info@struers.co.uk

**JAPAN**  
**Marumoto Struers K.K.**  
 Takara 3rd Building  
 18-6, Higashi Ueno 1-chome  
 Taito-ku, Tokyo 110-0015,  
 Phone +81 3 5688 2914  
 Fax +81 3 5688 2927  
 struers@struers.co.jp

**CHINA**  
**Struers (Shanghai) Ltd.**  
 Room 2705, Nanzheng Bldg,  
 580 Nanjing Road (W)  
 CN - Shanghai 200041  
 Phone +86 (21) 5228 8811  
 Fax +86 (21) 5228 8821  
 struers.cn@struers.dk

**SINGAPORE**  
**Struers A/S**  
 10 Eunos Road 8,  
 #12-06 North Lobby  
 Singapore Post Centre  
 Singapore 408600  
 Phone +65 6299 2268  
 Fax +65 6299 2661  
 struers.sg@struers.dk

**DEUTSCHLAND**  
**Struers GmbH**  
 Karl-Arnold-Strasse 13 B  
 D-47877 Willich  
 Telefon +49(02154) 486-0  
 Telefax +49(02154) 486-222  
 verkauf.struers@struers.de

**ÖSTERREICH**  
**Struers GmbH**  
 Zweigniederlassung Österreich  
 Ginzkeyplatz 10  
 A-5020 Salzburg  
 Telefon +43 662 625 711  
 Telefax +43 662 625 711 78  
 stefan.iintschinger@struers.de

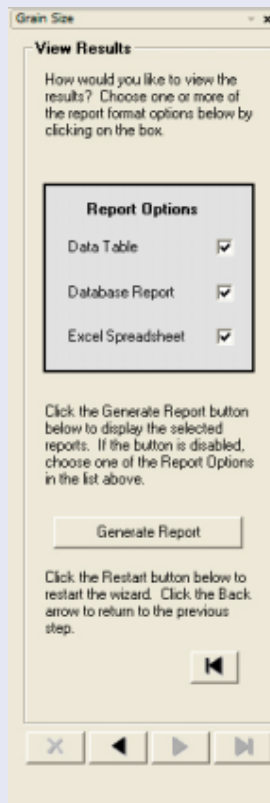
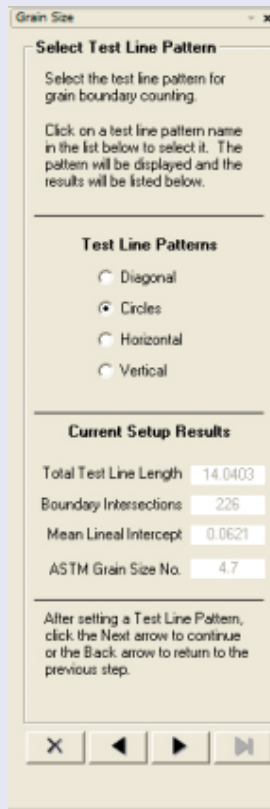
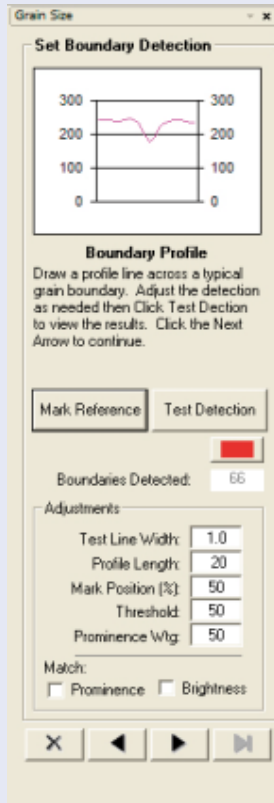
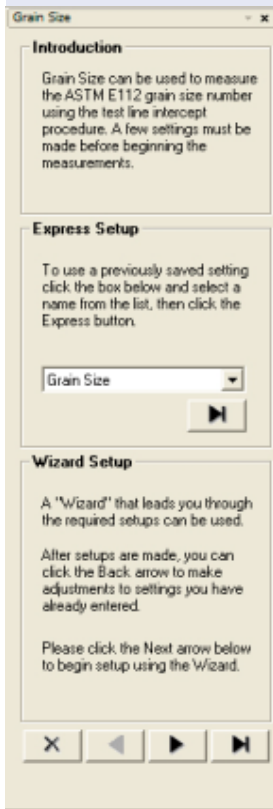
**SCHWEIZ**  
**Struers GmbH**  
 Zweigniederlassung Schweiz  
 Weissenbrunnstrasse 41  
 CH-8903 Birmensdorf  
 Telefon +41 44 777 63 07  
 Telefax +41 44 777 63 09  
 rudolf.weber@struers.de

**THE NETHERLANDS**  
**Struers GmbH Nederland**  
 Electraweg 5  
 NL-3144 CB Maassluis  
 Tel. +31 (0) 10 599 72 09  
 Fax +31 (0) 10 599 72 01  
 glen.van.vugt@struers.de

**CZECH REPUBLIC**  
**Struers GmbH**  
 Ocelářská 799  
 CZ-190 00 Praha 9  
 Tel. +420 2 84 818 227  
 Fax +420 2 660 32 278  
 david.cernicky@struers.de

**POLAND**  
**Struers Sp. z o.o.**  
 Oddział w Polsce  
 ul. Lirowa 27  
 PL-02-387 Warszawa  
 Tel. +48 22 824 52 80  
 Fax +48 22 882 06 43  
 grzegorz.uszynski@struers.de

**HUNGARY**  
**Struers GmbH**  
 Magyarországi fióktelep  
 Puskás Tivadar u. 4  
 H-2040 Budaörs  
 Phone +36 (23) 428-742  
 Fax +36 (23) 428-741  
 zoltan.kiss@struers.de



### Scentis Image Modules

A large number of image analysis modules are available, many of which conform to ASTM, ISO and DIN standards:

	Code:	Cat. no:
Multiple Phase Percent Area	SCIPA	36003001
Grain Sizing	SCIRA	36003002
Inclusion or 2nd-Phase Constituent Measurement	SCIND	36003003
Particle Size / Sphericity	SCIPS	36003004
ASTM E384 Microindentation / Macro Hardness Measurement	SCIMI	36003005
Brinell Hardness Measurement	SCIBI	36003006
Thickness, Layers and Coatings	SCITI	36003007
Graphite in Cast Iron	SCICI	36003008
Dendritic Arm / Cell Spacing	SCIAS	36003009

The Scentis image modules allow you to perform sophisticated analysis very easily. Simply select the appropriate analysis module and follow the intuitive guidance of the built-in wizards.

For further information on these modules, contact your local dealer. You can also visit us at [www.struers.com](http://www.struers.com)

*Struers' products are subject to constant product development. Therefore, we reserve ourselves the right to introduce changes in our products without notice.*