

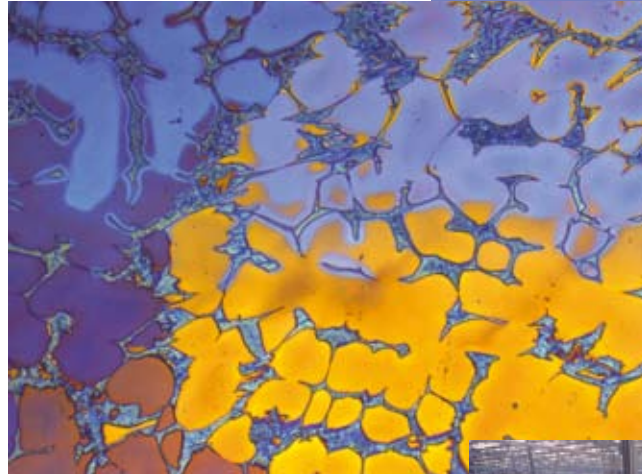
# Metallographic preparation of copper and copper alloys

Copper, together with gold and tin were the first metals put to use by ancient man. The ease with which it could be shaped and formed, its attractive colour and its corrosion resistance were among some of the reasons why it found widespread use in the manufacture of early weaponry, jewellery, liturgical vessels and everyday domestic objects.

Metallic copper has been known since about 9.000 BC and was widely used by 5.000 BC. When its value as an alloy with tin was recognised, the birth of the Bronze Age initiated a profound cultural and economic development in Europe and the Mediterranean countries.

Historically, casting of bronze has a long tradition, but it is only since the 1920s that hot rolling and extrusion of copper and its alloys have been practiced. Nowadays, most of the copper produced is in wrought form, and with its high electrical conductivity copper is much used as cables, switch-gear components, transformers, motor windings, and generators. Oxygen free copper is mainly used in the electro-nics industry.

The corrosion resistance and high thermal conductivity of copper make it suitable for tubes, vessels and heat exchangers in the chemical, and food and beverage industry. Apart from the traditional applications of



Aluminium bronze, CuAl<sub>8</sub>, shows dendritic structure with  $\alpha$ - $\beta$  eutectoid. Colour etching according to Klemm, pol. light, 100x.

copper for water and heating pipes, architects have in recent years discovered the appeal of designing facades with oxidised copper sheets.

The metallography of copper and its alloys is used for grain size measurement and purity checks by qualifying and quantifying the copper oxide content. On occasion, in certain brasses, the distribution of lead is determined as it can influence the machining process. In cast alloys the general microstructure and distribution of eutectic or lead is evaluated as well as the presence of shrinkage cavities or porosity.



### Difficulties in the preparation of copper and its alloys

Pure copper is soft and ductile, easy to deform and prone to form scratches.

Bronzes, and even some of the harder brasses, may be susceptible to severe scratching.

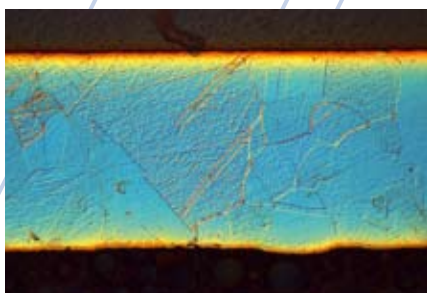


Fig. 1: Pure copper wire, with final polish of OP-S, DIC, 200x.

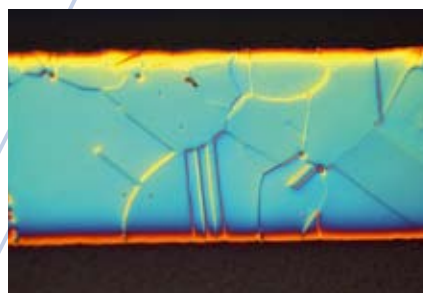


Fig. 2: Same sample as Fig. 1 with final polish of OP-S-ammonia water-hydrogen peroxide-mixture, DIC, 200x.

### Solution

- Avoiding coarse grinding abrasives
- Thorough diamond polishing with soft cloths
- Chemical-mechanical fine polishing

# Production and application



Fig. 3:  
Electrolytic refining

**Copper**  
from raw material to electrolytic copper

Although metallic copper occurs naturally, it is mainly extracted from sulphide ores in a metallurgical smelting process. A small amount of copper is also produced by hydro-metallurgical process. A brief description of the four steps in the copper production process is provided below.

## 1. Copper matte, 75% Cu:

In this first smelting process for extraction, copper concentrates, mainly chalcopyrite ( $\text{CuFeS}_2$ ), are roasted and melted with fluxes in an oxygen flash furnace to matte copper. Matte is a mixture of copper sulphide and iron sulphide and contains approx. 75% copper.

## 2. Blister copper, 96-98% Cu:

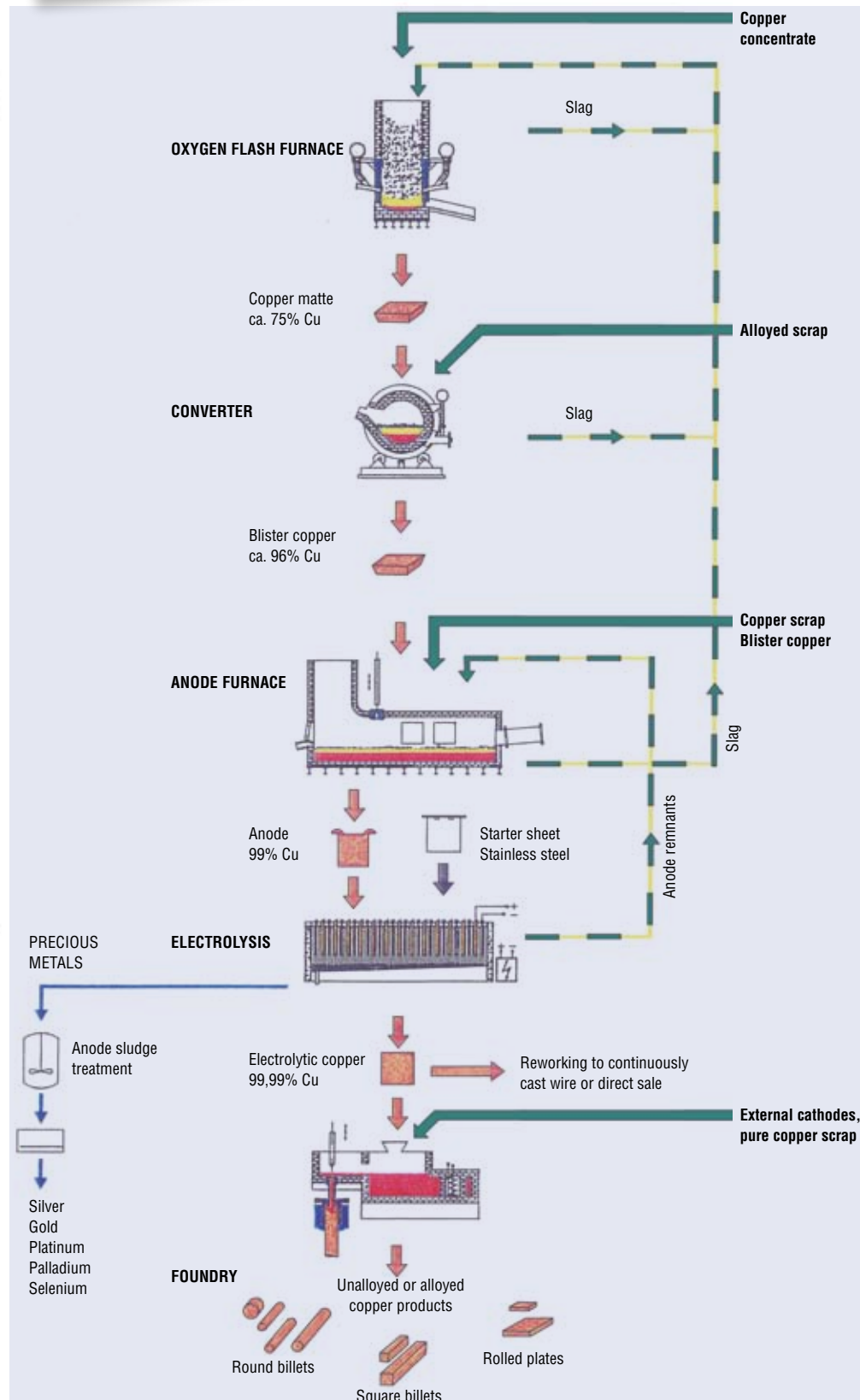
In a converter air is blown into the liquid matte to oxidise the sulphides. The resulting blister copper contains approx. 96-98% copper.

## 3. Anode copper, 99% Cu:

Blister copper is refined in the anode furnace. It is melted with copper scrap and rests of anodes from the electrolytic refining. Air blowing the melt, produces an oxidizing atmosphere which reduces the impurities that are then discharged as slag. The high oxygen content of the melt needs to be lowered to less than 0.1% as copper oxides make the copper brittle. The oxygen content is lowered by blowing natural gas into the melt, which reduces the copper oxide to copper, releasing steam and carbon dioxide. The resulting copper is 99% pure and cast into anodes that are subsequently used for electrolytic refining.

## 4. Electrolytic refining, copper cathodes, 99.99% Cu:

The copper anodes are still contaminated with metals such as Ni, Pb, Ag, Pd and Au. During the electrolytic refining process, high purity copper is produced whereby the impurities drop to the bottom of the electrolyses cell and are recovered. A solution of sulphuric acid and copper (II) sulphate, functions as electrolyte. Using direct current, the oxidation occurs at the anode, which is dissolved, and the pure copper is deposited at the cathode "starter sheet" of



Simplified schematic diagram of copper production



Fig. 4:  
Control valve for the distribution  
of potable water.



Fig. 5: Copper with red copper oxides,  
dark field, 500x.

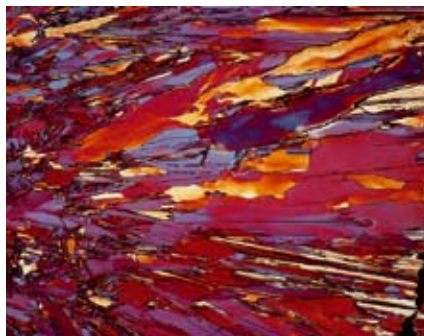


Fig. 7: Copper cathode, etched according  
to Klemm, 100x.



Fig. 6: Oxygen free copper, etched with ammonium  
peroxydisulfat, 100x.

pure copper or stainless steel, from which it is mechanically removed.

The cathode plates of this very pure copper are melted with 50% pure copper scrap and cast into plates, round and square billets which are then converted to sheets, pipes, wire and casts. (Almost half the demand of copper today is covered by copper scrap and recycled copper.)

With increasing purity, the electrical and thermal conductivity, as well as the price of copper increase. Therefore the use of pure copper depends on the application of the product. Due to its excellent properties, oxygen free copper for electronics (OFE) is used as a basic material for semi conductors, switches and sealing rings in vacuum technology and electron tubes.

The largest amount of copper is used in construction for facades, roofs, potable water pipes and heating installations, as well as the electrical parts industry for motor coils, generators and power supply systems. Additional fields of applications are cryogenics and air conditioning technology, chemical industry and beverage and brewing technology.

## Copper alloys

There are a large range of copper alloys; however, zinc (brass) and tin (bronze) are the most important alloying elements for copper. Some of the most important alloys and their applications will be briefly described in the following section.

**Brasses** are copper alloys with 5 - 45% zinc. Copper has a high solubility for zinc and the alloys are very homogenous. Brass with less than 28% zinc is called red brass and is especially suitable for machining. With increasing zinc content the reddish copper colour changes to the yellow of brass. Alloys up to 37% zinc consist of  $\alpha$  - solid solution and are suitable for cold forming. With increasing zinc content the brass becomes harder and therefore easier to machine. From 38% zinc, the alloys display a two-phase  $\alpha$  -  $\beta$  microstructure which is suitable for hot forming. By adding aluminium, manganese, iron, nickel and tin, special types of brass, which have specific chemical or mechanical properties, can be produced. Additions of small amounts of lead improve the machinability of brass.

Depending on the zinc content, different brasses are used in various fields of application: from watches and jewellery to electro-technology (CuZn5), to springs, screws, pins, die forged parts (CuZn30), to armatures (CuZn40) and bearings for sea water resistant pump housings (CuZn10Sn2).



Fig. 8: Anti-friction and roller bearing brass cages



Danish Embassy, Berlin, clad with oxidised  
copper plates.

Courtesy: Danish Foreign Ministry



Fig. 9:  
Wrought bronze tubes  
and profiles

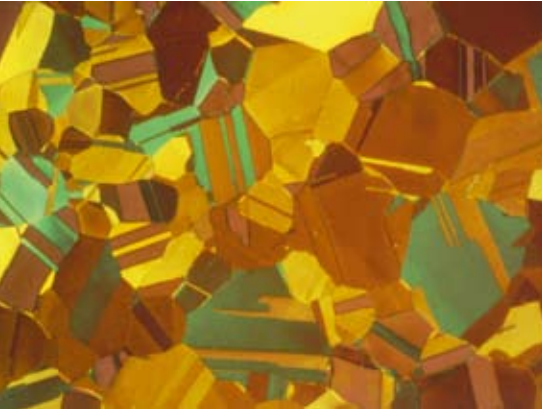


Fig.10:  $\alpha$ -brass, colour etched, 200x.

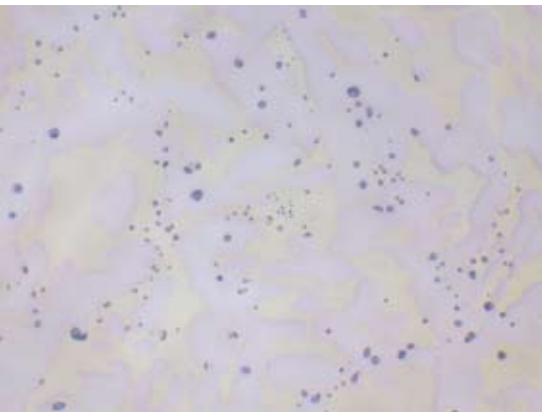


Fig. 11:  $\alpha$ - $\beta$ -brass cast (CuZn40Pb2) with grey-blue lead inclusions, unetched, 500x.

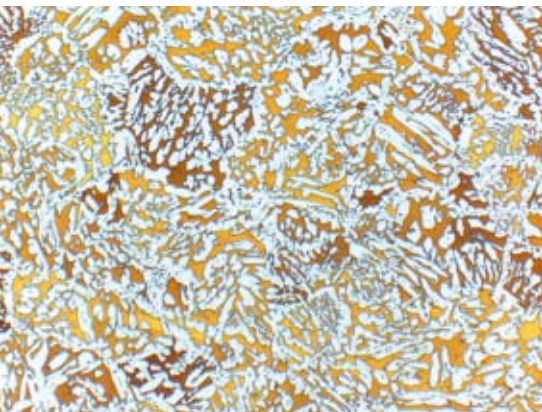


Fig.12:  $\alpha$ - $\beta$ -brass cast, etched according to Klemm, light  $\alpha$ -solid solution in dark matrix of  $\beta$ -solid solution, 100x.

**Bronzes** are copper-tin alloys that are divided into wrought alloys, with up to 8.5% tin, and cast alloys, with usually 9-12% tin, and also so-called bell casts with up to 20% tin.

Depending on the required properties, small amounts of zinc and phosphorus can be added to the wrought alloys, e.g. for bearings. These alloys are called phosphor bronzes. Lead, nickel and iron are common additions to cast alloys.

Cu-Sn-Zn-alloys are called gun metal. They are often used for the manufacture of slide bearings, worm gears, bearing bushes; parts which need a bearing surface capable of withstanding high contact loads. As well as good corrosion resistance, Gun metal has a low friction coefficient which means it can operate under such conditions without seizure.

Aluminium bronzes are copper alloys with up to 11% aluminium, displaying high strength at elevated temperatures and very good corrosion resistance. They are suited for marine propellers, highly stressed rotors for pumps and water turbines, and bearings and parts for the chemical industry. Copper-aluminium wrought alloys are used in mechanical and light engineering.

Beryllium bronze has high strength and hardness, with the specific property of not producing sparks when striking or impinging other metals. Therefore this type of bronze is suited for tools in an explosive environment such as refineries.

Due to their excellent corrosion resistance, copper-nickel alloys are used in desalination plants, for coins, heating wires in toasters and hair driers. The copper-nickel-zinc alloys, called German silver, display high strength, are corrosion resistant and are easily formed. Fields of application are surgical instruments, food industry, base metal for silver cutlery, contacts in connectors and jewellery.



Fig.13: Cast bronze pump housing



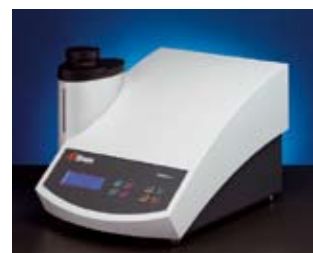
Fig.14: Wrought bronze liners with graphite

## Difficulties in the preparation of copper and copper alloys

With increasing purity, copper becomes softer and more susceptible to mechanical deformation and scratches. Consequently, grinding can cause deep deformation in high purity copper while grinding and polishing abrasives can be pressed into the surface. Copper alloys are harder, but still have a tendency to form scratches, which in some bronzes may only occur only in some individual grains.

## Recommendations for the preparation of copper and copper alloys

For **sectioning** of copper a hard silicon carbide cut-off wheel is used that is generally suitable for non-ferrous metals. For **mounting**, a phenolic resin is in most cases sufficient.



CitoPress  
Hot mounting press

## Mechanical Preparation

Pure copper and copper alloys with low alloying contents.

### Grinding

Step	PG	FG 1	FG 2	FG 3
Surface	SiC- Paper	SiC-Paper	SiC-Paper	SiC-Paper
Grit	320	800	1200	4000
Lubricant	Water	Water	Water	Water
rpm	300	300	300	300
Force (N)	150	150	150	150
Time	As needed	1 Min.	1 min.	1 min.

### Polishing

Step	DP	OP	*Wet the polishing cloth with water and polish with a few drops of the etchant without any polishing medium. Formula: see table on page 6.
Surface	MD-Mol	OP-Chem	
Suspension	DiaPro Mol	Iron (III) nitrate*	
rpm	150	150	
Force (N)	150	90	
Time	4 min.	1 min.	

## Copper alloys

### Grinding

Step	PG	FG
Surface	SiC-Paper	MD-Largo
Körnung* / Suspension	220 or 320	DiaPro Allegro/Largo
Lubricant	Water	
rpm	300	150
Force (N)	180	180
Time	As needed	4 min.

### Polishing

Step	DP	OP
Surface	MD-Mol*	OP-Chem
Suspension	DiaPro Mol	OP-S**
rpm	150	150
Force (N)	150	90
Time	3 min.	1-2 min.

\*Alternative: MD-Dac

\*\*96 ml OP-S, 2 ml ammonia water (25%), 2 ml hydrogen peroxide (3%)

electrolytically, but the results are not very well suited for quantitative analysis, especially if the alloy contains lead.

Prerequisite for a good electrolytic polish is a preceding fine grinding with SiC-paper up to 2400# or 4000#. Due to the different phases in cast alloys, they are not suited for electrolytic polishing.

Electrolyte:	D2
Area:	0.5 cm <sup>2</sup>
Voltage:	24 V
Flow rate:	10
Time	20 sec

Directly after polishing the sample can be etched with the same electrolyte for 4 seconds with 2-4 volts.

## Mechanical grinding and polishing

It is recommended that plane grinding is carried out with the finest possible grit in order to avoid any excessive mechanical deformation. Hardness, size and number of samples have to be taken into account, but even with larger samples of pure copper, plane grinding with 500# SiC-paper is sufficient. Large cast parts of copper alloys can be ground with 220# or 320#. It is also important that the force for grinding is low to avoid deep deformation.

As indicated in the table with the preparation data, for the soft alloys fine grinding with SiC-paper with fine grits is recommended, whereas MD-Largo with diamond can be used for the harder alloys. Better planeness and edge retention is obtained using MD-Largo.

Diamond polishing has to be carried out until all deformation and embedded abrasives from grinding have been removed. The chemical-mechanical fine polishing with silicon dioxide is especially important as an almost scratch free surface can be achieved. For pure copper, the final polish with a solution containing iron nitrate has proven to give very good results, and for copper alloys, a mixture of OP-S suspension with hydrogen peroxide and ammonia water is recommended (Formula below the table). After 1 minute polishing the result is checked under the microscope. If necessary the polish should be continued for another minute and the result checked again. It is recommended to continue this polish/check sequence until the required quality of the result has been achieved. If the attack is too fast or too strong the mixture should be diluted with water.

(Approx. 30 sec before the end of polishing, water is poured onto the polishing cloth to rinse the sample as well as the cloth. Then the sample is washed again with clean water from the tap and then dried.)

The preparation data are for the automatic grinding and polishing of 6 mounted samples, 30 mm diameter, clamped into a holder.

**Electrolytic Polishing** is suited for pure copper and  $\alpha$  - brass wrought alloys. Two-phase  $\alpha$  -  $\beta$  - brass can also be polished

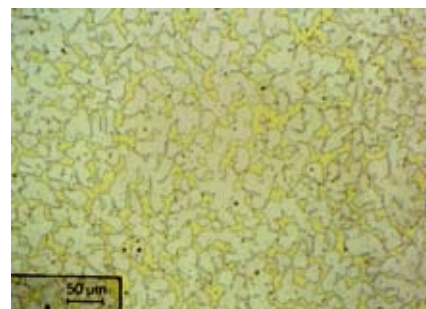


Fig. 15:  $\alpha$ - $\beta$ -brass cast, mechanically polished, unetched, 200x.

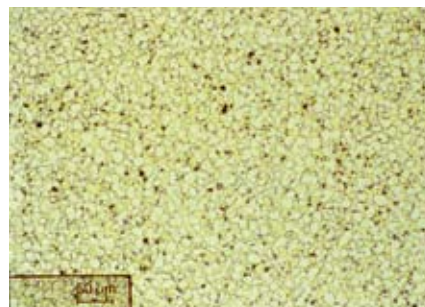


Fig. 16: Same specimen as Fig. 15 electrolytically polished, unetched, 200x. The lead inclusions are pulled out and therefore appear larger and more numerous than in Fig. 15.

## Etching

There are numerous etchants for copper and its alloys that are relatively easy to apply. Most of the cast alloys are not difficult to etch. It can be more difficult to find the right etching solution for some of the wrought alloys, especially when they are severely cold worked. In these cases a colour etch can be helpful.

It needs to be pointed out that lead is attacked by the etchants and mostly only black voids remain. Micrographs that are to document the quantity and distribution of lead always have to be taken before etching. The colour of pure lead is grey-blue.

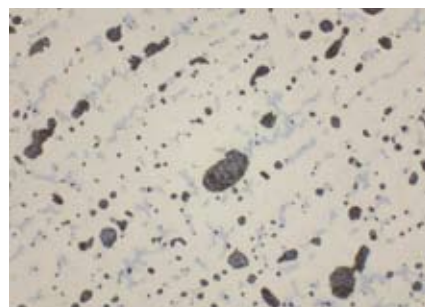


Fig. 17: Bronze cast, CuSn8Pb, unetched, large and small blue-grey lead inclusions, pale blue  $\alpha$ - $\delta$  eutectoid discernible, 500x.

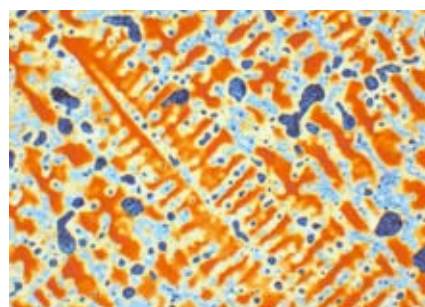
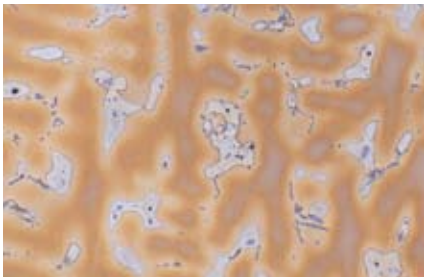


Fig. 18: Same specimen as in Fig. 17, colour etched according to Klemm, dendritic structure with light blue eutectoid and blue lead inclusions. Small lead inclusions can not be clearly differentiated, 500x.



Bronze cast, CuSn10, etched with iron (III) chloride, dendritic structure  $\alpha$ - $\delta$  eutectoid, 200x.

Application	Etchant
Grain area etch for copper, brass and bronzes	100 ml water 10 g ammonium peroxydisulfate Use fresh!
All types of copper	100-120 ml water or ethanol 20-50 ml hydrochloric acid 5-10 g iron (III) chloride (concentration variable)
Grain boundaries Grain areas	25 ml distilled water 25 ml ammonia water 5-25 ml hydrogen peroxide, 3%
$\alpha$ - $\beta$ brass	120 ml Water 10 g copper (II) ammonium chloride Add ammonia water until precipitate dissolves
Fast and good polish for pure copper	100 ml water 100 ml ethanol 19 g iron (III) nitrate
Colour etch according to Klemm	100 ml cold saturated sodium thiosulfate 40 g potassium metabisulfite

## Summary

Due to its good formability, high electric and thermal conductivity and corrosion resistance, pure copper is mainly used in electric engineering, the electronics industry and in the food and beverage industry. The application of brass and bronze wrought and cast alloys ranges from small parts to sea water resistant pump housings. The metallography of copper and its alloys is used in quality control mainly for checking purity and grain size determination. In addition, cast alloys are examined for general structure evaluation. Copper is soft and ductile and particularly prone to mechanical deformation. Therefore care needs to be taken that for the first grinding step the finest possible grit is used. Diamond polishing is carried out on medium soft to soft cloths and can take relatively long for pure copper. Chemical-mechanical final polishing with OP-S suspension is essential and results in a scratch free surface. Lead free wrought alloys can also be electrolytically polished. Etching with the common etchants is fairly easy, whereby colour etching can reveal some attractive structures in cast bronzes.

## Authors

Elisabeth Weidmann, Anne Guesnier, Struers A/S

## Acknowledgements

We wish to thank Gebr. Kempe, Ople, Germany, for the permission to reproduce the photos of the pump housing Fig.13 and valve Fig. 4.

We wish to thank Buntmetall amstetten Ges.m.b.H. Amstetten, Austria, for sample material and we thank Silvia Topsever and Siegfried Pirschl for their support.

We wish to thank Enzesfeld-Caro Metallwerke AG, Enzesfeld, Austria, for the permission to reproduce Figs. 8, 9 and 14, and we thank Andreas Drivodelits for his support.

We wish to thank G. Kiessler and G. Elsner, Max-Planck Institut für Metallforschung, Stuttgart, Germany, for the permission to reproduce Figs. 15 and 16.

We wish to thank Deutsches Kupferinstitut (German Copper Institute), Düsseldorf, Germany, for the permission to reproduce Fig. 3.

We thank Wieland Fischer, Struers GmbH, Willich, Germany, for the micrographs Fig.1 and 2.

## Bibliography

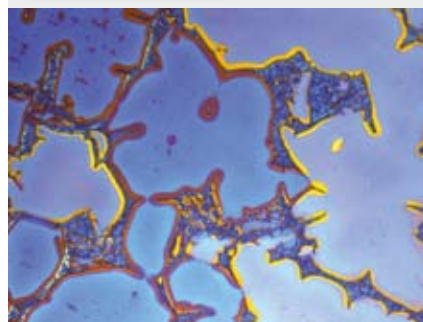
Current printed information from Deutsches Kupferinstitut, Düsseldorf, Germany.

ASM Handbook, Vol. 9, Metallography and Microstructures, ASM, 2004.

Metals Handbook, Desk Edition, ASM, 1997.

Handbuch der metallographischen Ätzverfahren, M. Beckert und H. Klemm, VEB Deutscher Verlag für Grundstoffindustrie, Leipzig, 1976.

Metallographische Anleitung zum Farbätzen nach dem Tauchverfahren, E. Weck, E. Leistner, Deutscher Verlag für Schweißtechnik, Düsseldorf, 1982



Aluminium bronze, colour etched according to Klemm, pol. light, 200x.

## USA and CANADA

**Struers Inc.**  
 24766 Detroit Road  
 Westlake, OH 44145-1598  
 Phone +1 440 871 0071  
 Fax +1 440 871 8188  
 info@struers.com

## SWEDEN

**Struers A/S**  
 Smältvägen 1  
 P.O. Box 11085  
 SE-161 11 Bromma  
 Telefon +46 (0)8 447 53 90  
 Telefax +46 (0)8 447 53 99  
 info@struers.dk

## FRANCE

**Struers S. A. S.**  
 370, rue du Marché Rollay  
 F- 94507 Champigny  
 sur Marne Cedex  
 Téléphone +33 1 5509 1430  
 Télécopie +33 1 5509 1449  
 struers@struers.fr

## NEDERLAND/BELGIE

**Struers GmbH Nederland**  
 Electraweg 5  
 NL-3144 CB Maassluis  
 Tel. +31 (0) 10 599 72 09  
 Fax +31 (0) 10 599 72 01  
 gjen.van.vugt@struers.de

## BELGIQUE (Wallonie)

**Struers S. A. S.**  
 370, rue du Marché Rollay  
 F- 94507 Champigny  
 sur Marne Cedex  
 Téléphone +33 1 5509 1430  
 Télécopie +33 1 5509 1449  
 struers@struers.fr

## UNITED KINGDOM

**Struers Ltd.**  
 Unit 25a  
 Monkspath Business Park  
 Solihull  
 B90 4NZ  
 Phone +44 0121 745 8200  
 Fax +44 0121 733 6450  
 info@struers.co.uk

## JAPAN

**Marumoto Struers K.K.**  
 Takara 3rd Building  
 18-6, Higashi Ueno 1-chome  
 Taito-ku, Tokyo 110-0015  
 Phone +81 3 5688 2914  
 Fax +81 3 5688 2927  
 struers@struers.co.jp

## CHINA

**Struers Ltd.**  
 Office 702 Hi-Shanghai  
 No. 970 Dalian Road  
 Shanghai 200092, P.R. China  
 Phone +86 (21) 5228 8811  
 Fax +86 (21) 5228 8821  
 struers.cn@struers.dk

## DEUTSCHLAND

**Struers GmbH**  
 Karl-Arnold-Strasse 13 B  
 D-47877 Willich  
 Telefon +49(02154) 486-0  
 Telefax +49(02154) 486-222  
 verkauf.struers@struers.de

## ÖSTERREICH

**Struers GmbH**  
 Zweigniederlassung Österreich  
 Ginzkeyplatz 10  
 A-5020 Salzburg  
 Telefon +43 662 625 711  
 Telefax +43 662 625 711 78  
 stefan.lintschinger@struers.de

## SCHWEIZ

**Struers GmbH**  
 Zweigniederlassung Schweiz  
 Weissenbrunnstrasse 41  
 CH-8903 Birnsdorf  
 Telefon +41 44 777 63 07  
 Telefax +41 44 777 63 09  
 rudolf.weber@struers.de

## CZECH REPUBLIC

**Struers GmbH**  
 Organizační složka  
 Havlíčkova 361  
 CZ-252 63 Rostoky u Prahy  
 Tel: +420 233 312 625  
 Fax: +420 233 312 640  
 david.cernicky@struers.de

## POLAND

**Struers Sp. z o.o.**  
 Oddział w Polsce  
 ul. Lirowa 27  
 PL-02-387 Warszawa  
 Tel. +48 22 824 52 80  
 Fax +48 22 882 06 43  
 grzegorz.uszynski@struers.de

## HUNGARY

**Struers GmbH**  
 Magyarországi fióktelep  
 Puskás Tivadar u. 4  
 H-2040 Budaörs  
 Phone +36 (23) 428-742  
 Fax +36 (23) 428-741  
 zoltan.kiss@struers.de

## SINGAPORE

**Struers A/S**  
 627A Aljunied Road,  
 #07-08 BizTech Centre  
 Singapore Post Centre  
 Singapore 389942  
 Phone +65 6299 2268  
 Fax +65 6299 2661  
 struers.sg@struers.dk